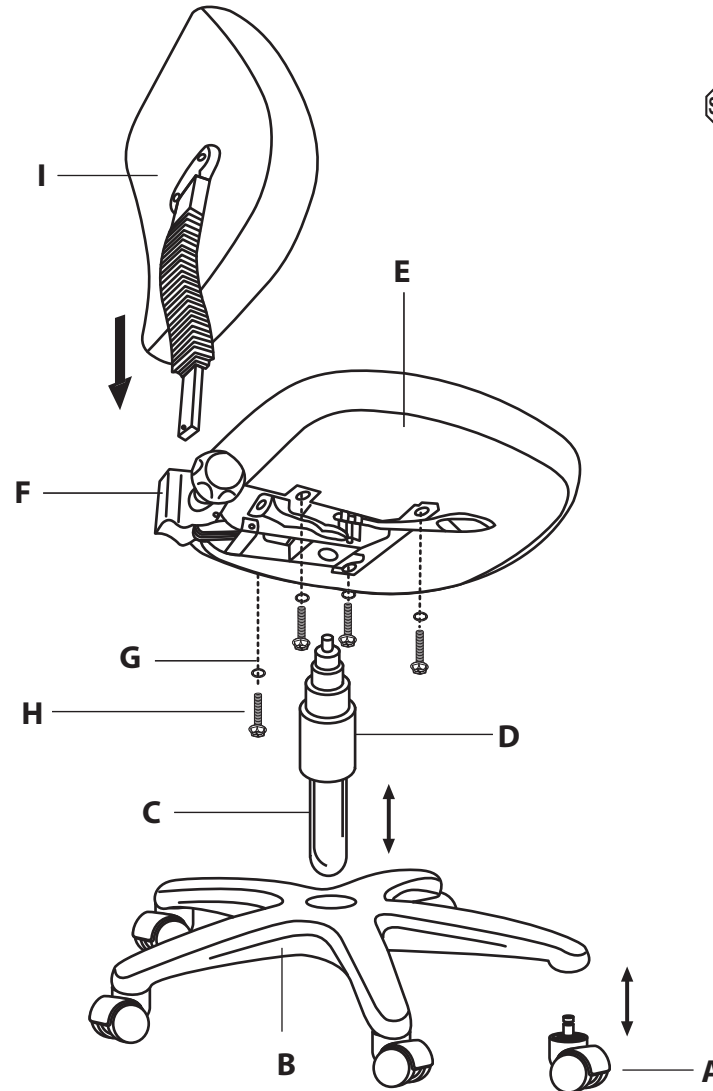
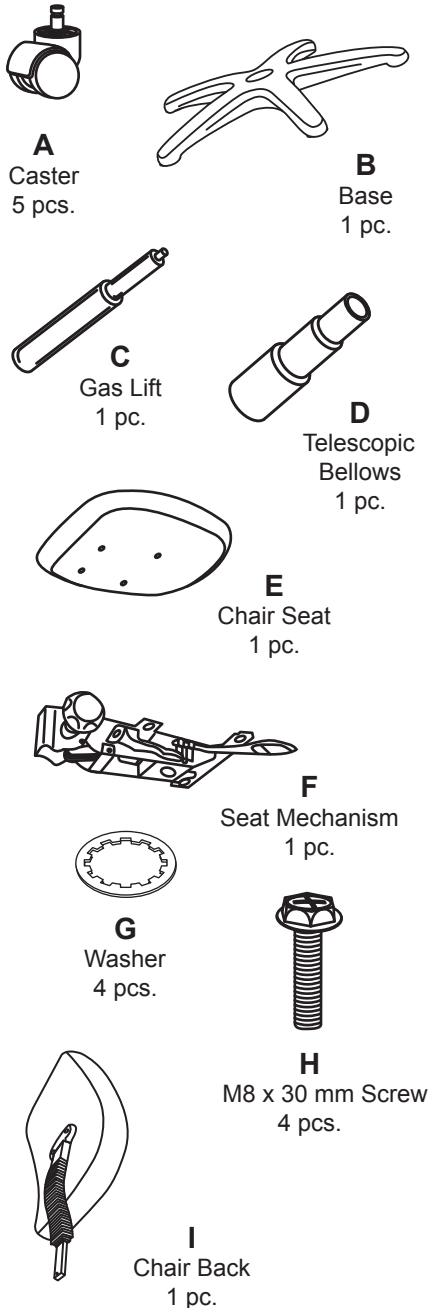


Model 118-2 / 118-2-AA / 118-2-DK / 118-2-AA-DK Posture Task Chair

Parts Listing



Assembly Instructions:



Tools Needed: Phillips Head Screwdriver

Please read all instructions before assembly.

Step 1: Insert Casters (A) into Base (B).

Step 2: Insert Gas Lift (C) into Base (B).

Step 3: Cover Gas Lift (C) with 3 piece Telescopic Bellows (D).

Step 4: Place Chair Seat (E) on a level, non-abrasive surface and align pre-drilled holes in Seat Mechanism (F), with holes in Chair Seat.

Step 5: Place four Washers (G) onto four M8 x 30mm Screws (H) and insert through the holes in the Seat Mechanism (F), and into the Chair Seat (E). Tighten with screwdriver.

Step 6: Carefully place Chair Seat (E) with attached Seat Mechanism (F) onto the Gas Lift (C), aligning the hole in the Seat Mechanism with the Gas Lift. Press down on Chair Seat to secure onto Base.

Step 7: Slide Chair Back (I) with attached back support bar into the slot on Seat Mechanism (F).

Step 8: Hand tighten tension knob on Seat Mechanism (F) until the Chair Back (I) is properly secured.

Step 9: Carefully sit on chair to make sure the Gas Lift (C) is properly inserted into the Base (B).

Step 10: Operate the Gas Lift Lever and the Back Posture Adjustment Lever on the Seat Mechanism (F), to be sure unit is working properly.

Step 11: Readjust Chair Back (I) by loosening tension knob on the Seat Mechanism (F) accordingly, for your personal comfort.

CAUTION:

1. Do not use this chair as a step ladder.
2. Check for loose screws and tighten them every 6 months.

2007.06.11.A



Holly Springs, NC, USA
800-520-7471 (voice)
919-303-6389 (voice)
919-362-4765 (fax)
support@ofminc.com
www.ofminc.com